

1 2 3 4

ITEM	DESCRIPTION	SIZE	MATERIAL	Q'TY	REMARKS
------	-------------	------	----------	------	---------

PT3/8 제어류측 S

PT3/8 자유류측 S

37.5

STROKE 6

(72.1)

30

90

10

9 8 7

FAST

7 6 5


PCFC600 BESKO
FLOW CONTROL
DUKIN IND CO LTD KOREA
[LOT NO.]

유압회로도

NOTE

1. 사용유 : ISO VG 46상당
2. 사용유온 : -10℃ - 80℃
3. 최고사용압력 : 350 kgf/cm²
4. 최대유량 : 30 l/min (P → C)
18 l/min (C → P)
5. 회로, 품명, LOT NO. MARKING 할 것.

NO.	DATE	REVISIONS	Q'TY	CHARGE	APPROVED	DATE	DESIGNED	CHECKED	REVIEWED	APPROVED	DISKETTE NO.	SCALE	1:1	DATE	2024.03
6	...														
5	...														
4	...														
3	...														
2	...														
1	...														



주식회사

특인가공

DUKIN INDUSTRIES

CO., LTD.

PLANT

STANDARD

FACILITY

FLOW CONTROL V/V

TITLE

PCFC-600 ASS'Y(PT3/8)

SIGN

전희선

CHECKED

REVIEWED

APPROVED

DISKETTE NO.

NO.

DATE

REVISIONS

Q'TY

CHARGE

APPROVED

DATE

240326

CHECKED

REVIEWED

APPROVED

DISKETTE NO.

REFERENCE DWG. NO.

REV

△

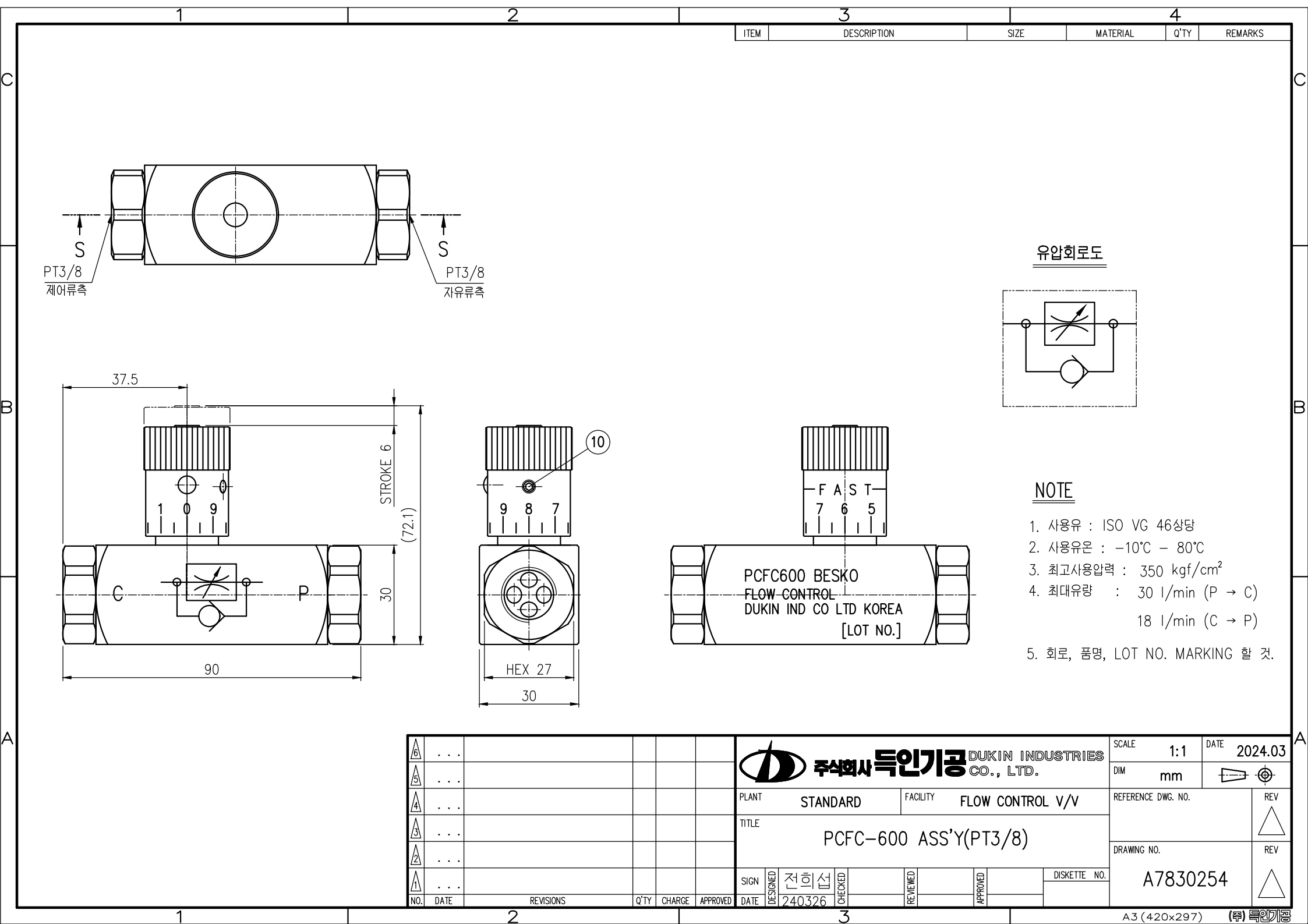
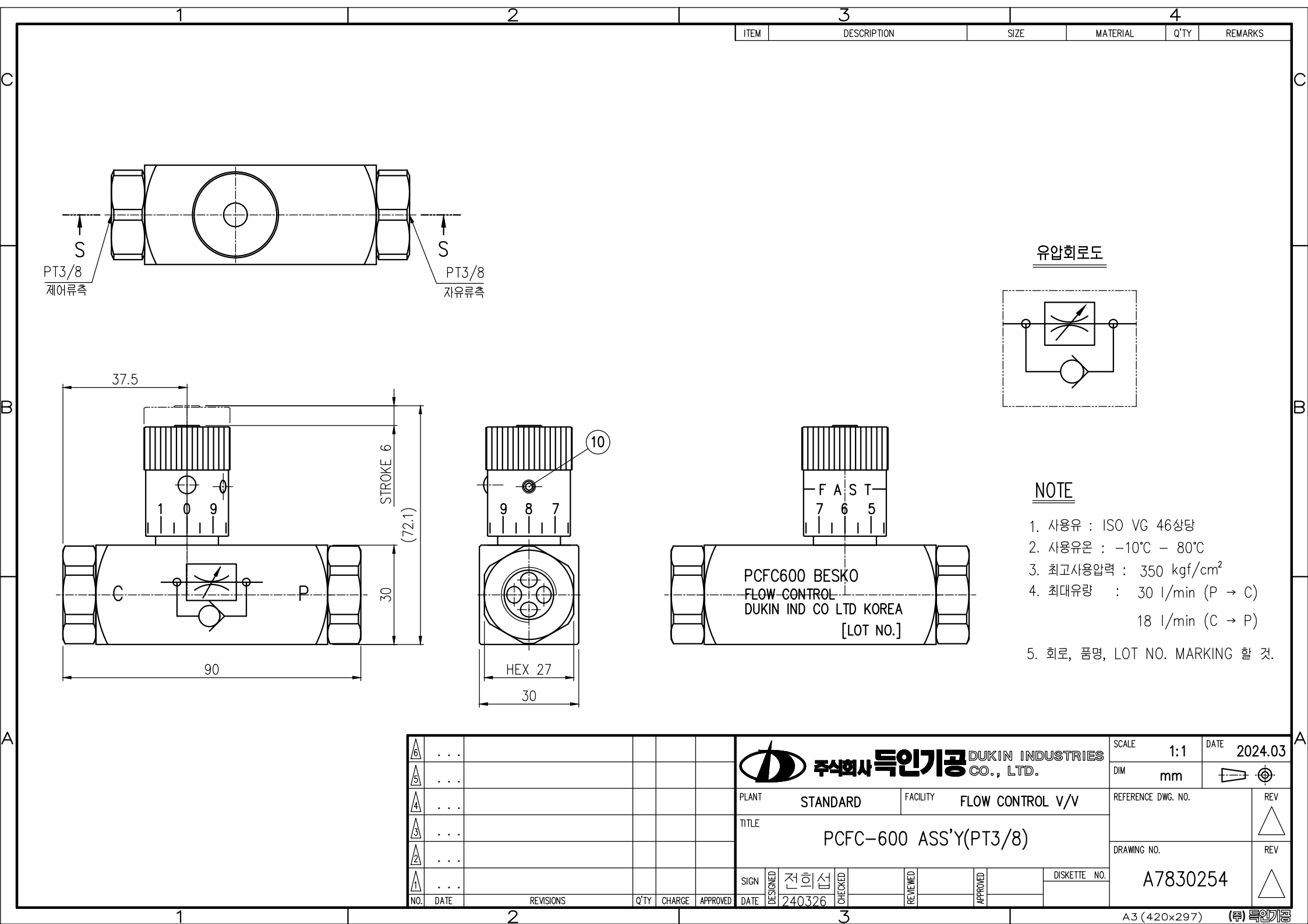
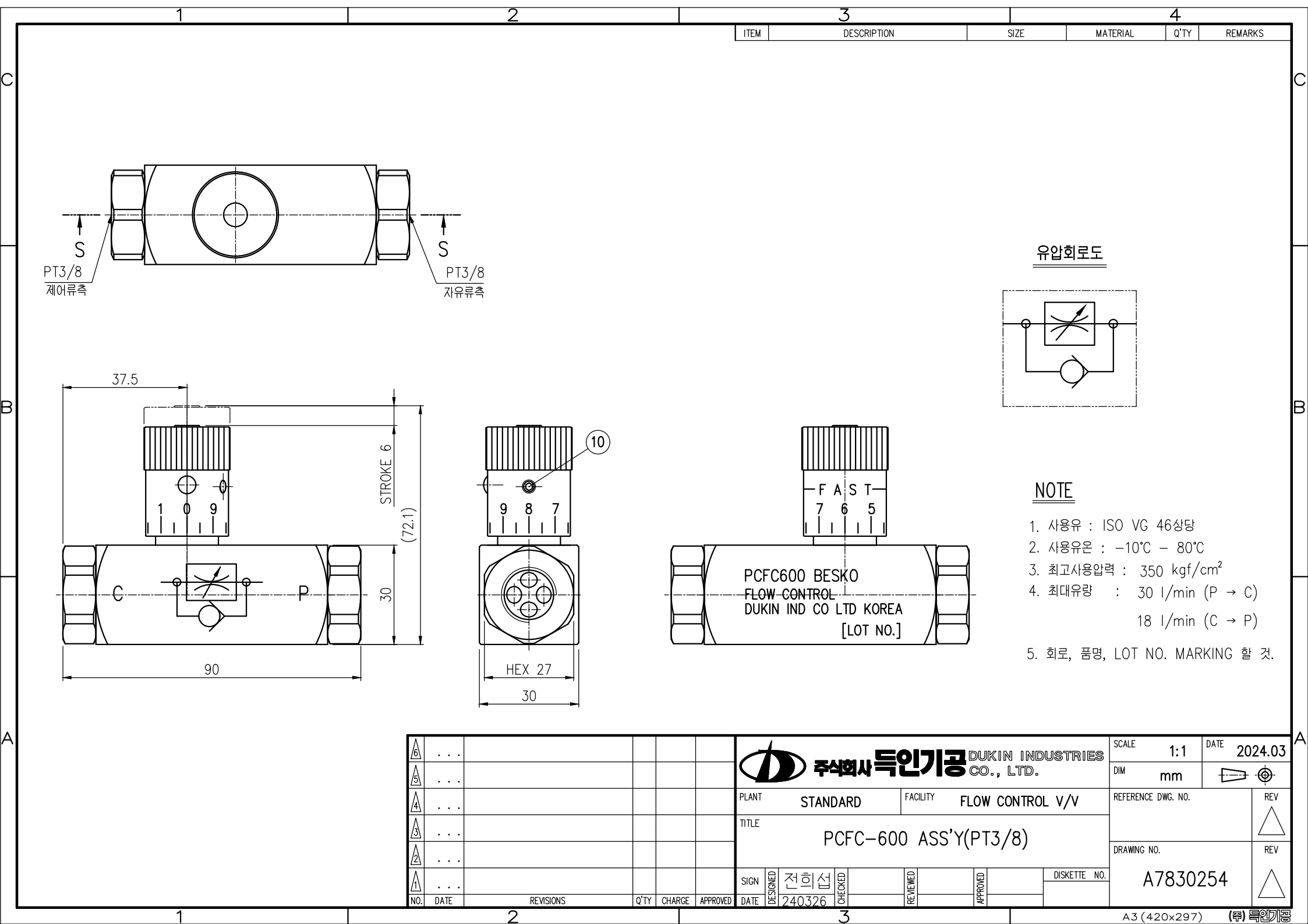
DRAWING NO.

A7830254

REV

△

A3 (420x297) (주) 특인가공



1 2 3 4

ITEM	DESCRIPTION	SIZE	MATERIAL	Q'TY	REMARKS
------	-------------	------	----------	------	---------

PT3/8 제어류측 S

PT3/8 자유류측 S

37.5

STROKE 6

(72.1)

30

90

10

9 8 7

FAST

7 6 5


PCFC600 BESKO
FLOW CONTROL
DUKIN IND CO LTD KOREA
[LOT NO.]

유압회로도

NOTE

1. 사용유 : ISO VG 46상당
2. 사용유온 : -10℃ - 80℃
3. 최고사용압력 : 350 kgf/cm²
4. 최대유량 : 30 l/min (P → C)
18 l/min (C → P)
5. 회로, 품명, LOT NO. MARKING 할 것.

NO.	DATE	REVISIONS	Q'TY	CHARGE	APPROVED	DATE	DESIGNED	CHECKED	REVIEWED	APPROVED	DISKETTE NO.	SCALE	DATE
6	...											1:1	2024.03
5	...											mm	
4	...												
3	...												
2	...												
1	...												



주식회사 덕인기공
DUKIN INDUSTRIES
CO., LTD.

PLANT STANDARD FACILITY FLOW CONTROL V/V

TITLE PCFC-600 ASS'Y(PT3/8)

SIGN 전희선

DATE 240326

REFERENCE DWG. NO.	REV
	△

DRAWING NO.	REV
A7830254	△

A3 (420x297) (주) 덕인기공

- 1 2 3 4

ITEM	DESCRIPTION	SIZE	MATERIAL	Q'TY	REMARKS
------	-------------	------	----------	------	---------

PT3/8 제어류측 S

PT3/8 자유류측 S

유압회로도

NOTE

 - 사용유 : ISO VG 46상당
 - 사용유온 : -10℃ - 80℃
 - 최고사용압력 : 350 kgf/cm²
 - 최대유량 : 30 l/min (P → C)
18 l/min (C → P)
 - 회로, 품명, LOT NO. MARKING 할 것.

37.5

STROKE 6

(72.1)

30

90

10

9 8 7

FAST

7 6 5

PCFC600 BESKO
FLOW CONTROL
DUKIN IND CO LTD KOREA
[LOT NO.]

HEX 27

30

NO.	DATE	REVISIONS	Q'TY	CHARGE	APPROVED	DATE	DESIGNED	CHECKED	REVIEWED	APPROVED	DISKETTE NO.
6	...						전희선				
5	...										
4	...										
3	...										
2	...										
1	...										

SCALE 1:1 DATE 2024.03

DIM mm

PLANT STANDARD FACILITY FLOW CONTROL V/V

TITLE PCFC-600 ASS'Y(PT3/8)

REFERENCE DWG. NO.

DRAWING NO. A7830254

REV

REV

DUKIN INDUSTRIES CO., LTD.

주식회사 덕인기공

30

9

8

7

FAST

7

6

5

PCFC600 BESKO
FLOW CONTROL
DUKIN IND CO LTD KOREA
[LOT NO.]

HEX 27

30

STROKE 6

(72.1)

30

90

37.5

PT3/8 제어류측 S

PT3/8 자유류측 S

유압회로도

NOTE

 - 사용유 : ISO VG 46상당
 - 사용유온 : -10℃ - 80℃
 - 최고사용압력 : 350 kgf/cm²
 - 최대유량 : 30 l/min (P → C)
18 l/min (C → P)
 - 회로, 품명, LOT NO. MARKING 할 것.

1 2 3 4

ITEM	DESCRIPTION	SIZE	MATERIAL	Q'TY	REMARKS
------	-------------	------	----------	------	---------

PT3/8 제어류측 S

PT3/8 자유류측 S

유압회로도

NOTE

- 사용유 : ISO VG 46상당
- 사용유온 : -10℃ - 80℃
- 최고사용압력 : 350 kgf/cm²
- 최대유량 : 30 l/min (P → C)
18 l/min (C → P)
- 회로, 품명, LOT NO. MARKING 할 것.

37.5

STROKE 6

(72.1)

30

90

1 0 9

9 8 7

10

HEX 27

30

FAST

7 6 5

PCFC600 BESKO
FLOW CONTROL
DUKIN IND CO LTD KOREA
[LOT NO.]

NO.	DATE	REVISIONS	Q'TY	CHARGE	APPROVED	SIGN	DESIGNED	CHECKED	REVIEWED	APPROVED	DISKETTE NO.
...	전희선	240326

SCALE 1:1 DATE 2024.03

DIM mm

PLANT STANDARD FACILITY FLOW CONTROL V/V

TITLE PCFC-600 ASS'Y(PT3/8)

REFERENCE DWG. NO.

DRAWING NO. A7830254

REV

REV

DUKIN INDUSTRIES CO., LTD.

주식회사 덕인기공

A3 (420x297) (주) 덕인기공