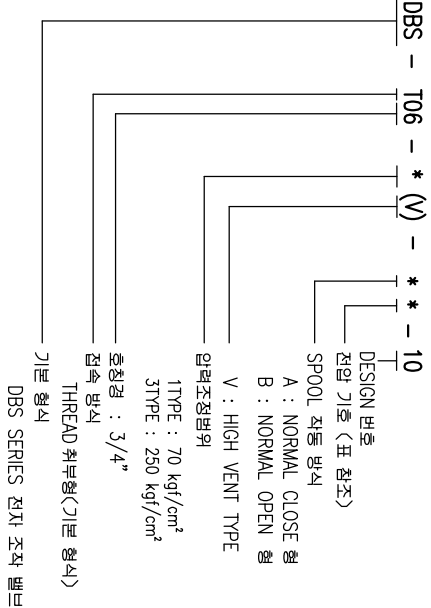
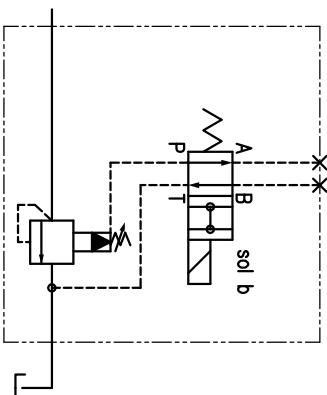
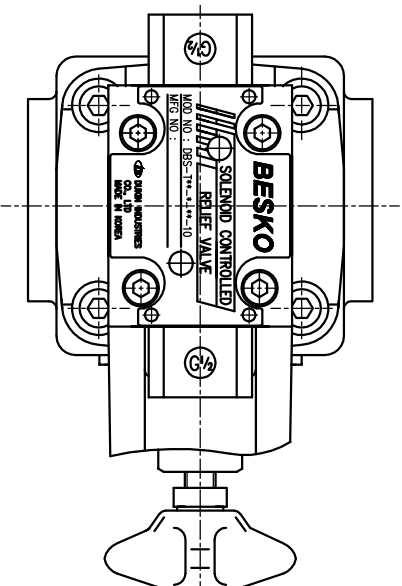
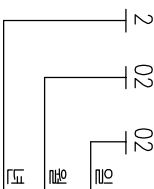


## 모든 것을 잃고

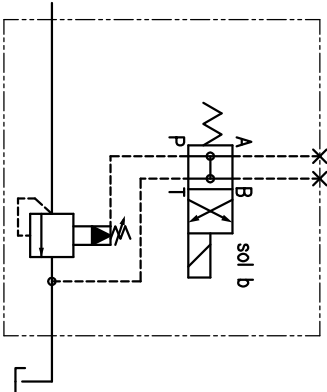


NOTE

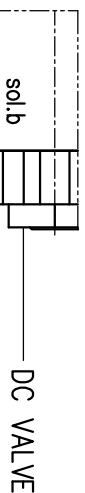
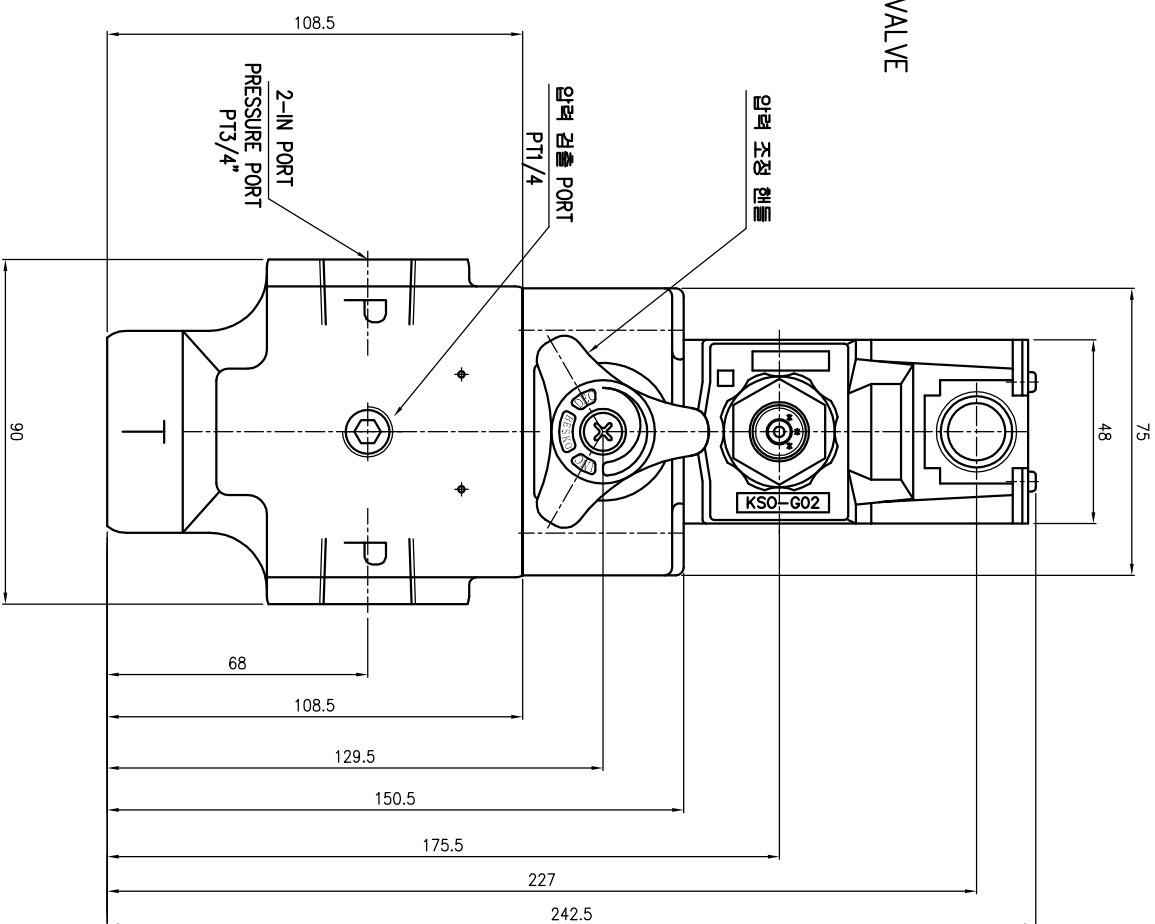
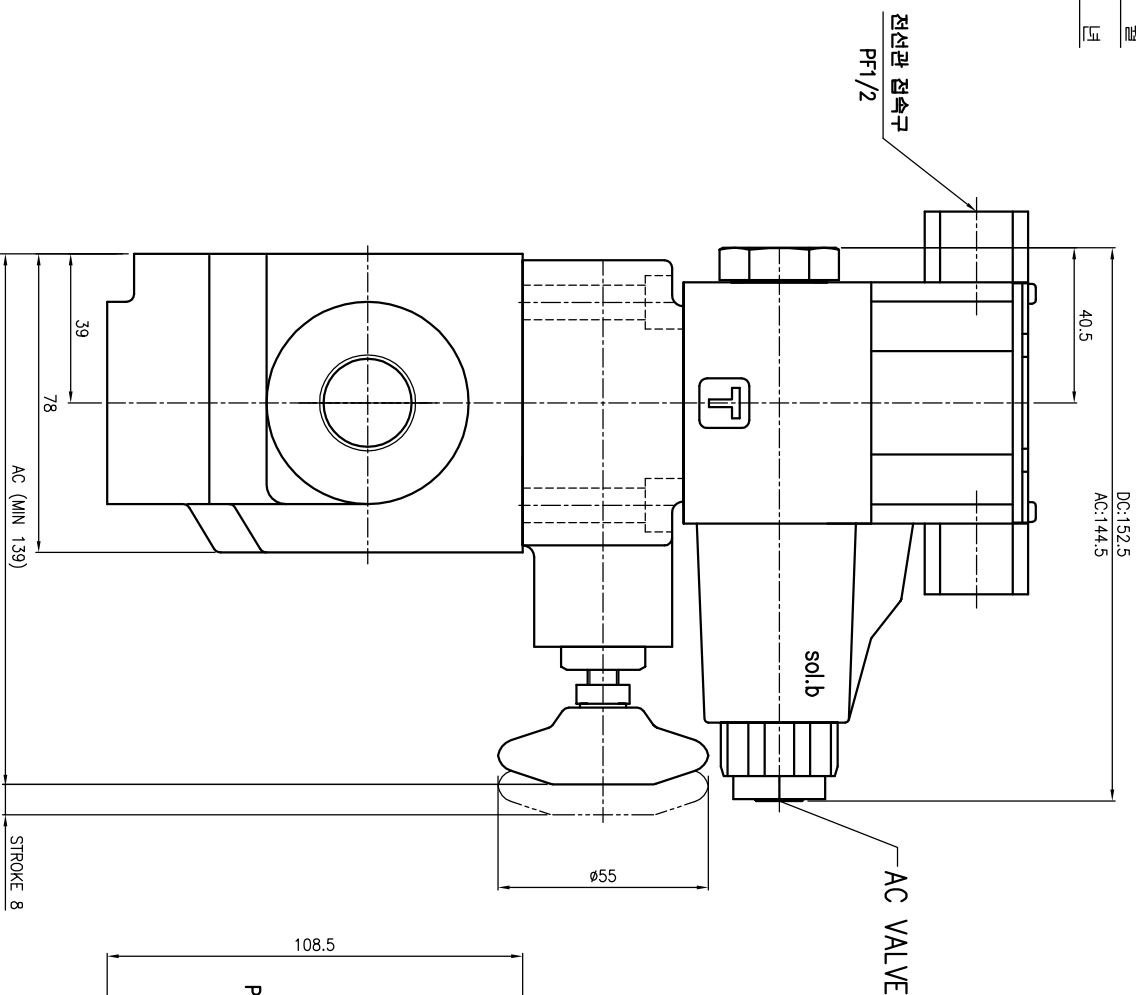
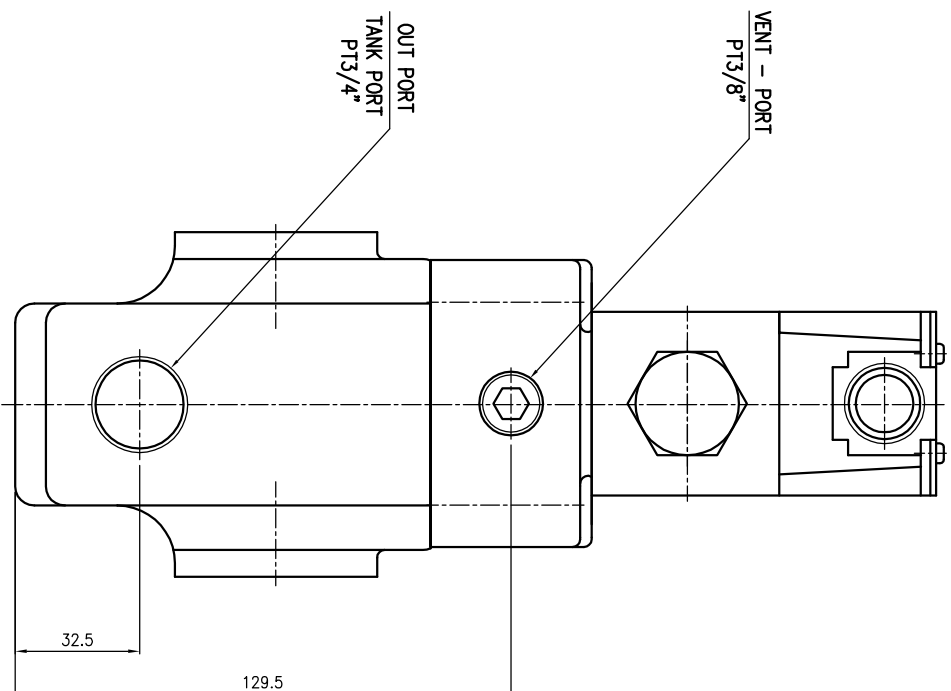
1. 압력조정범위 : 1TYPE - 70 kgf/cm<sup>2</sup>  
3TYPE - 250 kgf/cm<sup>2</sup>
2. 최대 유량 : 200 L/min
3. 호칭경 : 3/4"
3. 중 량 : 7.6kg
4. 도 장 색 : MUNSSELL NO 3.9B-5.2/3.6 (하늘색)
5. 관리 번호 해설 : (NAME PLATE 에 타각 함)



NORMAL CLOSE 형(A형)



NORMAL OPEN 형 (B형)



전압 기호	전 원 전 압
A	AC100V(50/60Hz) 110V(60Hz)
B	AC200V(50/60Hz) 220V(60Hz)
N	DC12 V
P	DC24 V

아홉 기

ITEM	DESCRIPTION	SIZE	MATERIAL	Q'TY	REMARKS
------	-------------	------	----------	------	---------

[illegible]