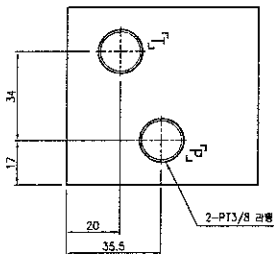
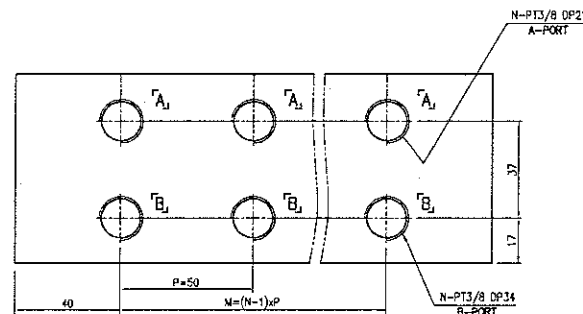
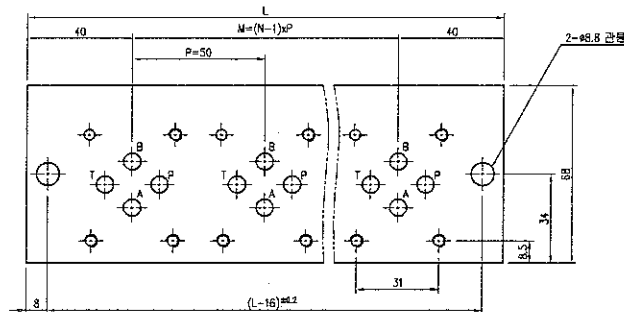


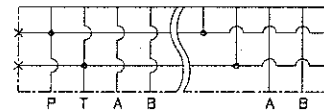
SOL. V/V 취부면 치수 (N EA)



| 형식기호 | 연수(N) | M | L | 중량(Kg) |
|--------|-------|-----|-----|--------|
| BT-202 | 2 | 50 | 130 | 4.2 |
| BT-302 | 3 | 100 | 180 | 6.0 |
| BT-402 | 4 | 150 | 230 | 7.8 |
| BT-502 | 5 | 200 | 280 | 9.6 |
| BT-602 | 6 | 250 | 330 | 11.4 |



유압 회로도

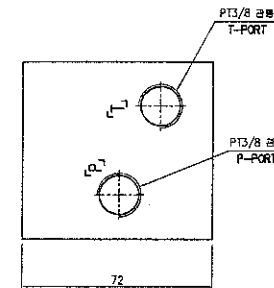


SPECIFICATION

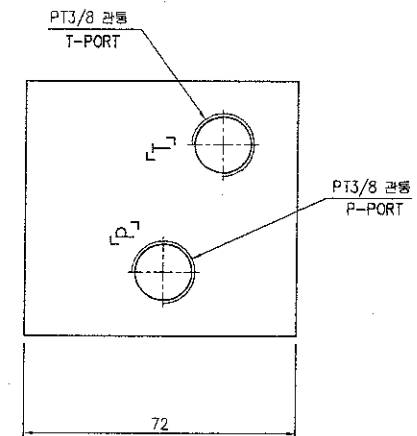
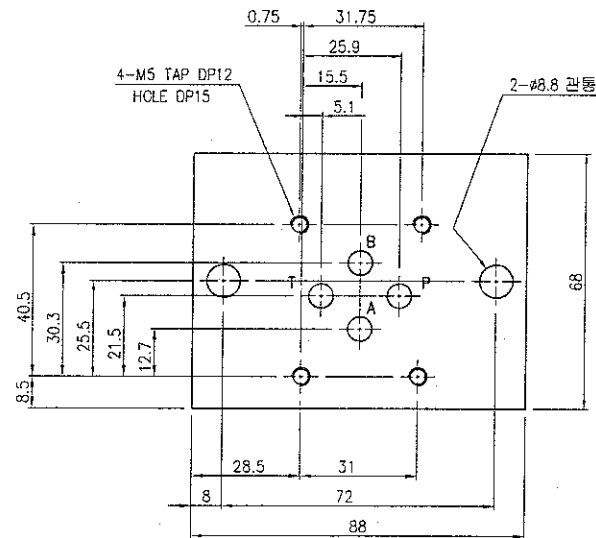
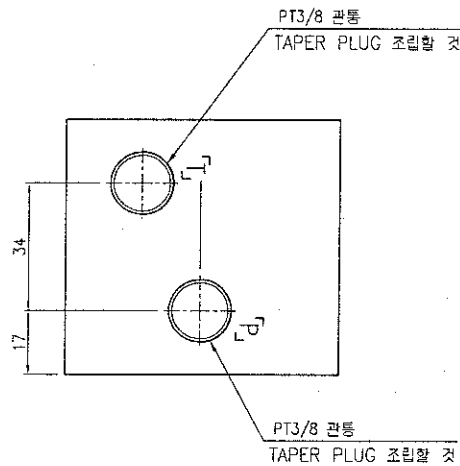
- 최고사용압력 : 250 kgf/cm²
- 최대유량 : 40 l/min
- 중량 : 부표 참조
- 형식 기호 설명 :

BT - * 02 A (BLACK)

- 아노다이징 색상
- 재질 알루미늄
- 규격 : 02 (1/4")
- 연수
- 기본형식

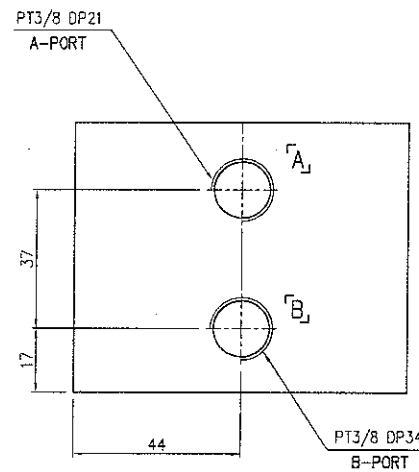
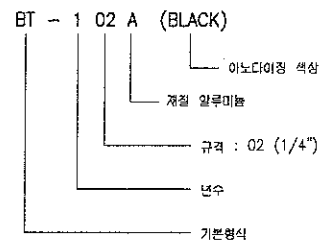


| | | |
|---|-------------------------------|---------------------------|
| 주석회사 덕진산업 주식회사 DUCJIN INDUSTRIES CO., LTD. | | SCALE 1/1 DATE 2018.01 |
| PLANT STANDARD FACILITY G02 VALVE BLOCK | REFERENCE Dwg. NO. 8820453 | REV 1 |
| TITLE BT - * 02 A (COLOR) | | |
| DRAWING NO. 8820453 | | |
| SHEET NO. 1 | | |

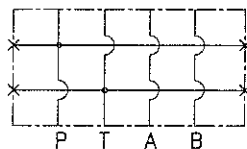


SPECIFICATION

- 최고사용압력 : 250 kgf/cm²
- 최대유량 : 40 l/min
- 중량 : 1.1 kgf
- 형식 기호 설명



SCHEMATIC DIAGRAM



| | | |
|--|--------|-------------------------------------|
| 주식회사 덕인기공 DUKIN INDUSTRIES CO., LTD. | | SCALE 1/1 DATE 2016.01 |
| PLANT STANDARD FACILITY G02 VALVE BLOCK | | REFERENCE Dwg. NO. |
| TITLE BT-102-A (COLOR) | | REV |
| SIGNATURE DESIGNED CHECKED EXAMINED APPROVED | | DRAWING NO. 8820452 DISKETTE NO. |
| NO. | DATE | REVISIONS |
| QTY | CHARGE | APPROVED |