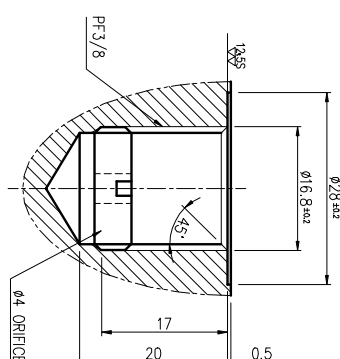


1. 사용유 : ISO VG 46상당
2. 사용유온 :  $-20^{\circ}\text{C} \sim 80^{\circ}\text{C}$
3. 최고 사용 압력 :  $250 \text{ kgf/cm}^2$
4. 최대유량 :  $45 \text{ L/min}$
5. MAIN RELIEF SETTING 압력 :  $180 \pm 5 \text{ kgf/cm}^2$  (at  $40 \text{ L/min}$ ,  $50^{\circ}\text{C}$ )
6. 최대배압 :  $25 \text{ kgf/cm}^2$
7. 내부누유 A(B)-T :  $5 \text{ cc/min}$  (압력  $100 \text{ kgf/cm}^2$ , 유온  $50^{\circ}\text{C}$ )
8. 부품시 A1,B1,A2,B2,P1,T1-PORT는 STEEL PLUG로 막을것.  
부품시 P,T,C-PORT는 PLASTIC PLUG로 막을것.
9. 도장색 : 탐청색 (GB)



PORT DETAIL(PF3/8)  
(A2-PORT 1개소)

[illegible]