

### NOTE

1. 사용유 : ISO VG 46SAE
2. 사용유온 : -10°C ~ 90°C (-20°C ~ 100°C / 5분 이내)
3. 사용압력 : 20 kgf/cm<sup>2</sup>
4. 사용유량 : 26 l/min
5. 리드선 단자 사양

HOUSING : MG640322)

TERMINAL : ST740482-3

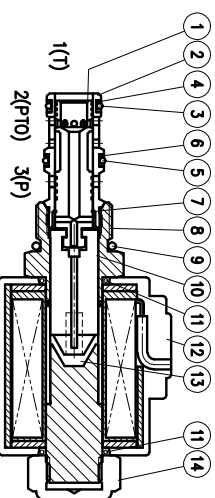
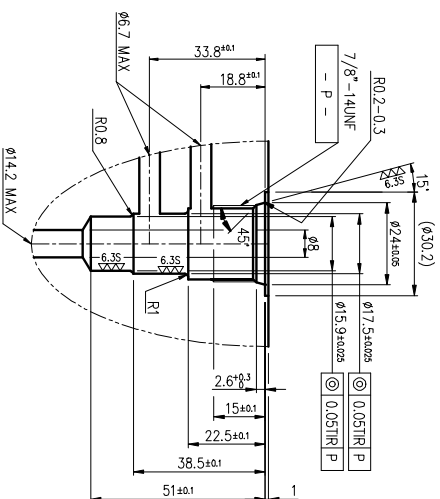
MODEL : 한국 단자

6. SOLENOID VALVE 사양

정격전압(V) : DC12V

정격전류(A) : 1.5A

허용 전압 범위 : DC10.8V ~ 13.2V



### SECTION S-S

### CARTRIDGE 세부치수

ITEM	DESCRIPTION	SIZE	MATERIAL	Q'TY	REMARKS
------	-------------	------	----------	------	---------

14	NUT		1		
13	SPRING	8841237	1		
12	COIL	8830450	1		
11	O-RING		2	1BP16	
10	PLUNGER	8841125	1		
9	O-RING		1	AS568-91O(Hs90)	
8	CARTRIDGE ASS'Y	8830494	1		
7	멈출린		1	Ø11용	
6	BACK UP RING		2	Ø14.7xØ17.3x0.8t	
5	O-RING		1	AS568-015(Hs70)	
4	BACK UP RING		2	Ø13xØ15.7x0.8t	
3	O-RING		1	AS568-014(Hs70)	
2	SLEEVE	8830487	1		
1	SPOOL	8830488	1		
NO	DESCRIPTION	MATERIAL	DRAW.NO	Q'TY	REMARK

**두킹** DUKLING INDUSTRIES CO., LTD.

### 4WD SOLENOID VALVE

SCALE: 1/1 DATE: 2007.12  
 DWG NO. mm  
 REFERENCE DWG. NO.  
 DRAWING NO. 8820497  
 DISKETTE NO.  
 SIGN: DESIGNED: CHECKED: REVIEWED: APPROVED:

NO. DATE REVISIONS Q'TY CHANGE APPROVED DATE  
 A2 (594x420)