

SECTION S-S

유압회로도

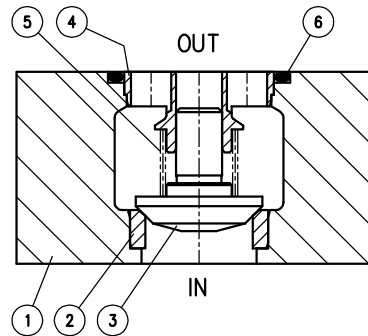
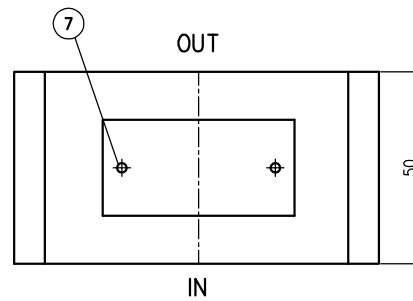
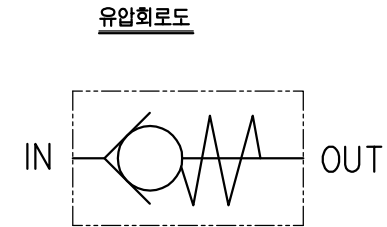
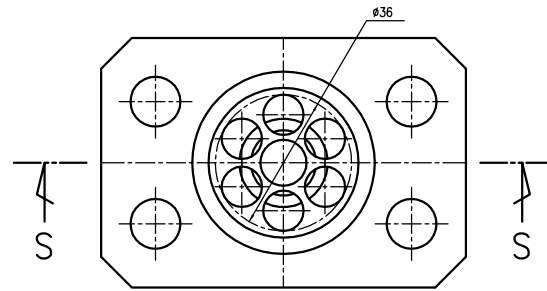


SPECIFICATION

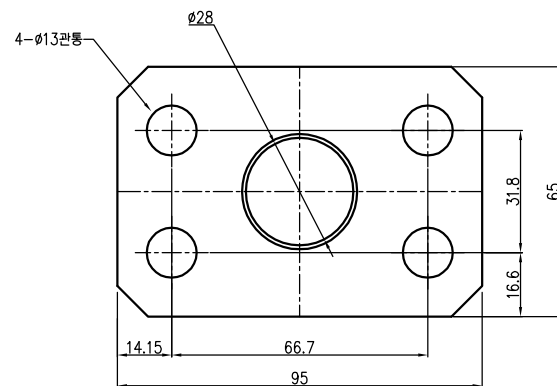
1. 사용유 : ISO VG 46 상당
2. 사용유온 :  $-10^{\circ}\text{C} - 80^{\circ}\text{C}$  ( $-20^{\circ}\text{C} - 90^{\circ}\text{C}$  / 5분간이내)
3. 최고사용압력 :  $420 \text{ kgf/cm}^2$
4. 압력강하 :  $4 \text{ kgf/cm}^2$  이하 (at  $200 \text{ l/min}$ )
5. CRACKING 압력 :  $0.2 \text{ kgf/cm}^2$
6. CHECK 누유 :  $1 \text{ cc/min}$  이하 (at  $100 \text{ kgf/cm}^2$ )

NO. DATE REVISIONS Q'TY CHARGE APPROVED		SIGN DESIGNED CHECKED REVIEWED APPROVED		DISKETTE NO.	
PLANT		FACILITY		CHECK VALVE	
TITLE		FLANGE TYPE CHECK V/V (1")		REFERENCE DWG. NO.	
DRAWING NO.		8820528-1		REV	
SCALE 1/1		DATE 2008.9		REV	

		5			
ITEM	DESCRIPTION	SIZE	MATERIAL	Q'TY	REMARKS



















SECTION S-S



## SPECIFICATION

1. 사용유 : ISO VG 46상당
2. 사용유온 :  $-10^{\circ}\text{C} \sim 80^{\circ}\text{C}$  ( $-20^{\circ}\text{C} \sim 90^{\circ}\text{C}$  / 5분간이내 )
3. 최고사용압력 :  $420 \text{ kgf/cm}^2$
4. 입력강하 :  $4 \text{ kgf/cm}^2$  이하 (at  $300 \text{ l/min}$ )
5. CRACKING 압력 :  $0.2 \text{ kgf/cm}^2$
6. CHECK 누유 :  $1 \text{ cc/min}$  이하 (at  $100 \text{ kgf/cm}^2$ )

	...						 <div>주식회사 덕인기공 DUKIN INDUSTRIES CO., LTD.</div>	SCALE 1/1		DATE 2008.9		
	...							DIM mm	 			
	...							PLANT	FACILITY CHECK VALVE		REFERENCE DWG. NO.	REV 
	...							TITLE	FLANGE TYPE CHECK V/V (1-1/4")		DRAWING NO.	REV 
	...										DISKETTE NO.	
NO.	DATE	REVISIONS	Q'TY	CHARGE	APPROVED	DATE	SIGN 	CHECKED 	CHECKED 	CHECKED 	APPROVED 	8820529-1

A2 (594x420) (주) 북인기공