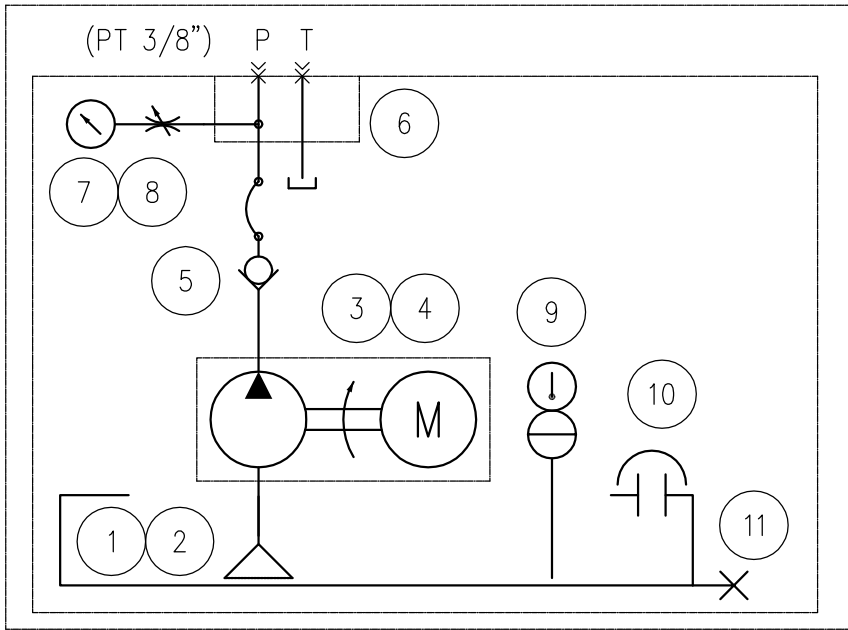
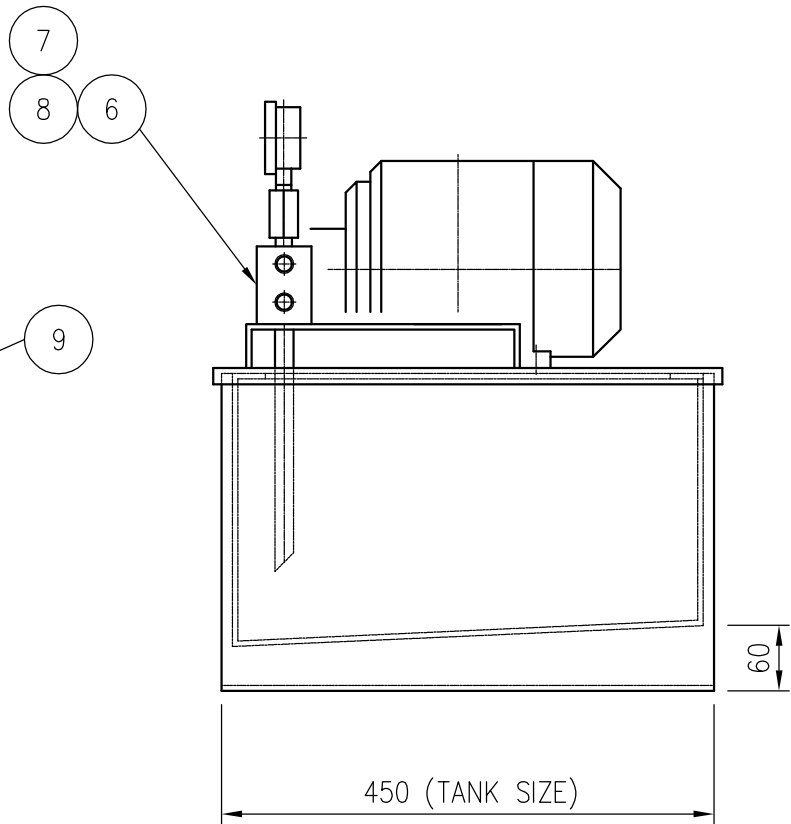
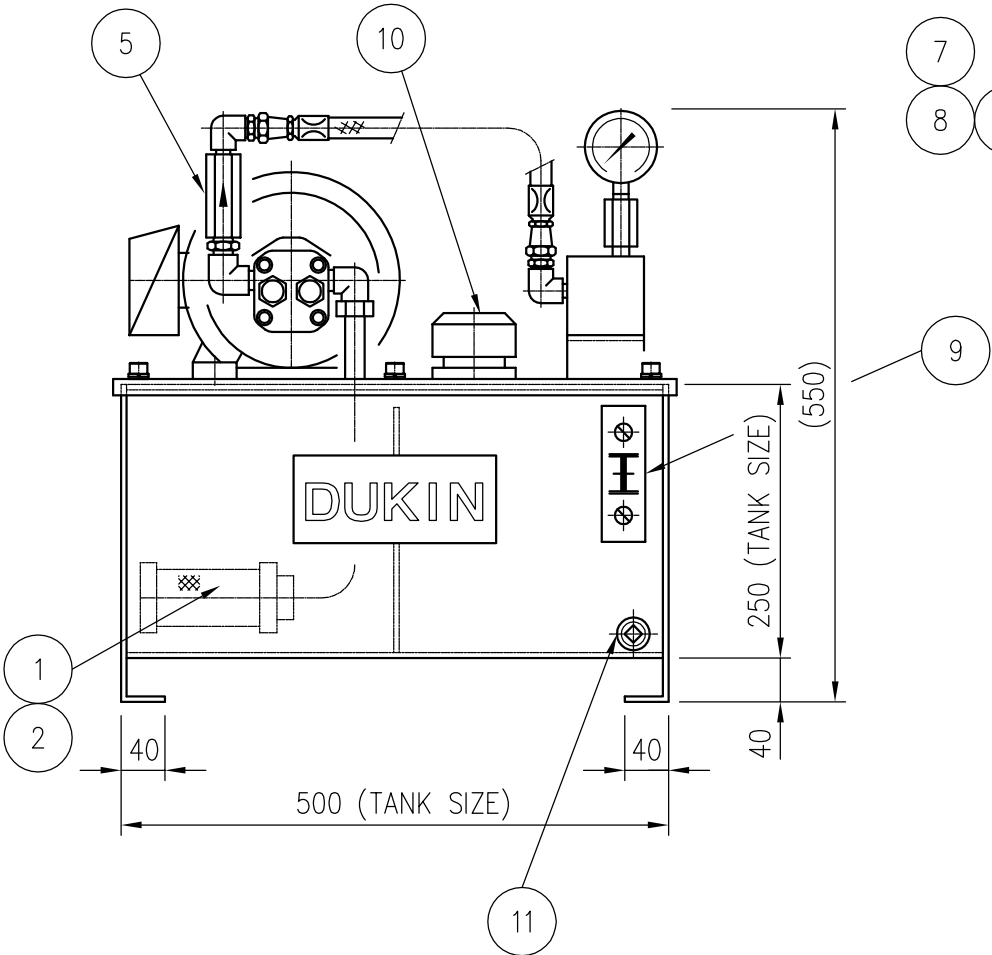
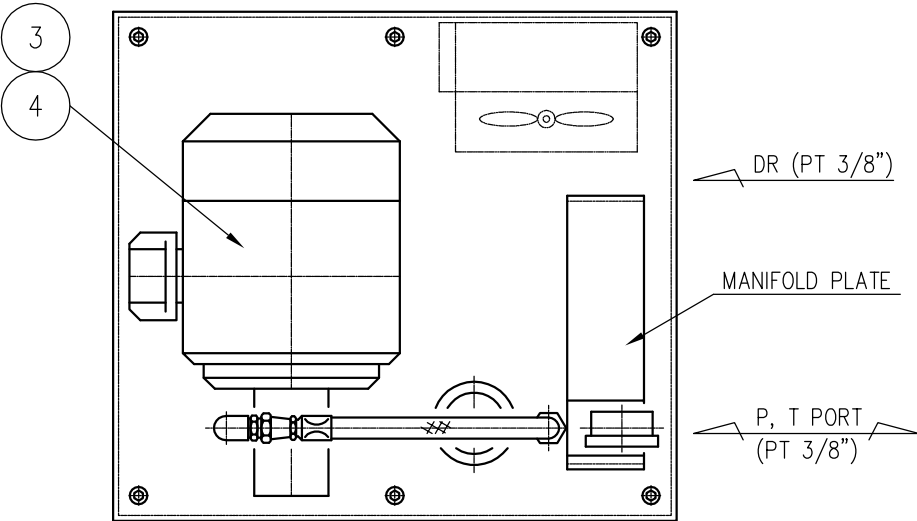


DPU-040-AP200/4.5/6.5/8.5-02
DPU-040-AP200/4.5/6.5/8.5-03

SPECIFICATION

AP200/4.5 (2HP)	PRESSURE	MAX. 100 kgf/cm ²
	DELIVERY	MAX. 8 L/min
AP200/6.5 (2HP)	PRESSURE	MAX. 70 kgf/cm ²
	DELIVERY	MAX. 12 L/min
AP200/8.5 (2HP)	PRESSURE	MAX. 55 kgf/cm ²
	DELIVERY	MAX. 15 L/min
AP200/4.5 (3HP)	PRESSURE	MAX. 150 kgf/cm ²
	DELIVERY	MAX. 8 L/min
AP200/6.5 (3HP)	PRESSURE	MAX. 100 kgf/cm ²
	DELIVERY	MAX. 12 L/min
AP200/8.5 (3HP)	PRESSURE	MAX. 80 kgf/cm ²
	DELIVERY	MAX. 15 L/min
ELEC' SOURCE		AC220/380V-4P-3Ø-60Hz
HYDRAULIC OIL		MINERAL OIL (ISO VG #46)
PAINTING COLOR		3.4 PB 3.6/8.2

ITEM	DESCRIPTION	SIZE	MATERIAL	Q'TY
1	OIL TANK	QT 40LT		1
2	SUCTION FILTER & FLANGE	SFN-04 & SFB-04		1
3	GEAR PUMP	AP200/4.5, 6.5, 8.5		1
4	ELEC' MOTOR	2HP (1.5Kw) / 3HP (2.2Kw)		1
5	IN-LINE CHECK VALVE	HDIN-T03-05		1
6	PORT BLOCK	BT-02-PT		1
7	PRESSURE GAUGE	A, Ø60 x 100K ~ 250K		1
8	GAUGE DAMPER	DGV-02		1
9	LEVEL GAUGE	C-76		1
10	AIR BREATHER	BAB-1163-40		1
11	DRAIN PLUG	1/2"		1
12				



HYDRAULIC SCHEMATIC DIAGRAM